



TRELLEBORG

Trelleborg

Forestry Tires



Twin Forestry T480. The track solution

When the going gets tough, T480 gets to work. The T480's transverse grooves and wide flat tire profile give it unmatched track grip and compatibility. Even without tracks, you will experience unmatched pulling power in every condition. Additionally, the tread design featuring inter-lug terraces ensures a self-cleaning tire that can always work harder and push further.



Key Benefits

- A perfect fit with tracks for exceptional grip.
- Transverse grooves and a wide flat tire profile for optimized track usage performance.
- Unique tread design with inter-lug terraces for effective self-cleaning and added pulling power.
- Large contact area with low ground pressure for less impact on forest floor.

T480 is designed according to the Trelleborg BlueTire technology, developed to reduce the environmental footprint as well as provide the end-user with premium productivity and efficiency.

BLUE TIRE
TECHNOLOGY

Transverse grooves

The transverse grooves and the wide flat profile gives a perfect fit with tracks for exceptional grip.

1



Transverse grooves
Optimal grip in tracks.

2



Wide lug shoulder
Good track lateral stability and shoulder robustness.

3



Wide flat tire profile
Excellent compatibility with tracks.

4



Inter-lug terraces
Good self-cleaning.



Twin Forestry T440 The traction solution

More traction, better accessibility – T440 takes the ProgressiveTraction® technology on board for the best possible grip. The interlug-terraces keep the tread clean all day long. The strong lug heads and shoulder, make your T440 an even better match for tracks.



Key Benefits

- Ideal for clay, mud, ice and snow - first class traction design means maximum accessibility.
- Exclusive ProgressiveTraction® and inter-lug terrace technology for proven better grip and self-cleaning with less impact on forest floor.
- New lug design with heavier shoulder, lug heads and transverse edges for effective track compatibility.

T440 is designed according to the Trelleborg BlueTire technology, developed to reduce the environmental footprint as well as provide the end-user with premium productivity and efficiency.

BLUE TIRE
TECHNOLOGY

Dual anchor with ProgressiveTraction®

The ProgressiveTraction® technology is characterized by a special double lug that operates on the soil at different times, progressively releasing high traction when and where it is needed. The double lug also provides the tire with better floatation capability, ensuring an even pressure distribution over the extra wide footprint.

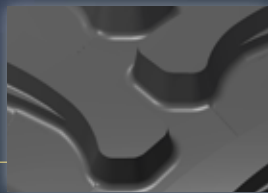
The different planes between the lugs flex in relation to one another, enhancing self-cleaning, particularly in heavy conditions.

1



Inter-lug terraces
Good self-cleaning.

2



Wide lug head and transverse edges
Large contact and enhanced grip in tracks.

3



Lug angle and design
Extra pull force and accessibility.

4



ProgressiveTraction® technology
Improved traction performance.

5



Wide lug shoulder
Good track lateral stability and shoulder robustness.



Skidder T418

The heavy duty solution

T418 is specifically designed for log skidding service with excellent penetration and tear resistance to provide longer tire life under the most severe operating conditions.

Forestry Skidder
T418

Forestry Skidder
T418
High Power



Key Benefits

- Designed specifically for the tough demands of log skidding service.
- The armored plies and steel belt protect the carcass against stumps, boulders and rocks.
- Maximum resistance to cutting and tearing for longer lifetime.
- Deep and strong lugs that provide and maximize traction and strong grip.
- Extra reinforced sidewall increases stability and protection against impact.

1



Carcass structure
Robust structure for tough forest conditions, built from durable cord and steel belt reinforcement.

2



Pattern design
The deep and strong 23° lugs provide maximum traction and a firm grip on slippery and soft surfaces.

3



Sidewalls
Extra rubber reinforcement in the sidewall increases the lateral stability of the tire and protects it against impact.

4



Bead
A specially design debris deflector protects the rim flange and tire bead. The dual bead cores ensure an exceptionally strong fit on the rim.



Agroforest T410

The flexible solution

T410 Agroforest represents the best choice for a combination of agricultural and forestry applications. It guarantees optimal performance in tough forestry service as well as in field use, where comfort and traction are required.



Key Benefits

- Reinforced sidewall to guarantee minimum impact and perforation.
- Special lug shape to ensure excellent grip and traction in tough terrain.
- High level of stability during heavy applications due to the shoulder design.
- Larger lug contact area compared to an ordinary tractor pattern.

Twin T404, T414, T421 The complementary solution

Key Benefits

- Large ground contact area for minimum soil compaction.
- Reinforced sidewalls.
- Low ground pressure.
- Good lateral stability.
- Excellent grip and traction in tough terrain.

Twin T404 for forestry trailers

This tire is characterized by its rounded shoulder design and wide contact area. The non-aggressive tread pattern is suitable for soft terrain.



Twin T414 for small forestry machines

This tire offers superior performance in the forest. The pattern design ensures high traction, excellent flotation and minimized damage to the soil structure.



Twin T421 for small forestry machines

This unique bias-belt design maximizes the ground contact area improving flotation and traction. The rounded shoulder ensures minimum soil compaction.



Twin Forestry for CTL-machines



SIZE	Tread Pattern	LI/SI/PR				New Tire		Tire in Service		SLR	RC	SRI	RIM	TUBE
		ROAD	PR	FOREST HT	FOREST LT	SW mm	OD mm	SW max mm	OD max mm					
650/45-22.5 LS2 TT	T440 SB	150A8	16	150A2	157A2	650	1160	683	1189	539	-	550	AG20.00	650/45-22.5
600/50-22.5 LS2 TT	T480 SB	149A8	16	149A2	156A2	610	1170	640	1199	550	3510	550	AG20.00	600/50-22.5
710/40-22.5 LS2 TT	T480 SB	161A8	20	161A2	169A2	710	1170	746	1179	540	3510	550	AG24.00	700/40-22.5
710/40-24.5 LS2 TT	T440 SB	163A8	20	163A2	170A2	710	1220	745	1230	570	3700	575	AG24.00	710/40-24.5
710/40-24.5 LS2 TT	T480 SB	163A8	20	163A2	170A2	710	1220	745	1230	570	3700	575	AG24.00	710/40-24.5
600/55-26.5 LS2 TT	T440 SB	165A8	20	165A2	172A2	600	1340	630	1373	626	4050	625	AG20.00	600/55-26.5
600/55-26.5 LS2 TT	T480 SB	165A8	20	165A2	172A2	600	1340	630	1373	626	4050	625	AG20.00	600/55-26.5
710/45-26.5 LS2 TT	T440 SB	168A8	20	168A2	175A2	710	1340	746	1357	625	4020	625	AG24.00	710/45-26.5
710/45-26.5 LS2 TT	T480 SB	168A8	20	168A2	175A2	710	1340	746	1357	625	4020	625	AG24.00	710/45-26.5
710/45-26.5 LS2 TT	T480 SB	173A8	24	173A2	180A2	710	1340	746	1357	625	4020	625	AG24.00	710/45-26.5
800/40-26.5 LS2 TT	T440 SB	170A8	20	170A2	177A2	800	1340	840	1357	625	4020	625	AG28.00	800/40-26.5
800/40-26.5 LS2 TT	T480 SB	170A8	20	170A2	177A2	800	1340	840	1357	625	4020	625	AG28.00	800/40-26.5
750/55-26.5 LS2 TT	T440 SB	182A8	24	182A2	190A2	750	1485	788	1499	690	4485	700	AG24.00	750/50-26.5
750/55-26.5 LS2 TT	T480 SB	182A8	-	182A2	190A2	750	1485	788	1499	690	4485	700	AG24.00	750/50-26.5
780/50-28.5 LS2 TT	T480 SB	182A8	24	182A2	190A2	780	1525	819	1543	705	4660	705	AG26.00	780/50-28.5
750/45-30.5 LS2 TT	T428 SB	173A8	20	173A2	180A2	750	1465	788	1497	700	4395	685	AG24.00	750/45-30.5
600/65-34 LS2 TL	T440 SB	163A8	20	163A2	170A2	610	1650	630	1690	765	5070	775	DW20A	600/65-34
710/55-34 LS2 TL	T440 SB	167A8	20	167A2	174A2	710	1650	746	1691	775	4950	760	DW24A	700/55-34

SB = Steelbelt TT = Tube Tire TL = Tubeless Tire

Skidder for FL-machines



SIZE	Tread Pattern	PR	New Tire		Tire in Service		SLR	RC	RIM	TUBE
			SW mm	OD mm	SW max mm	OD max mm				
23.1-26 TL	T418 FS SB	16	600	1615	615	1655	750	4810	DW20B	23.1-26 TR218
28L-26 TL	T418 FS SB	20	705	1630	725	1670	747	4855	DW25B	28L-26 TR218
28L-26 TL	T418 FS SB	26	705	1630	725	1670	747	4855	DW25B	28L-26 TR218
24.5-32 TL	T418 FS SB	16	630	1825	645	1870	832	5425	DH21	24.5-32 TR218
30.5L-32 TL	T418 FS SB	20	760	1840	780	1885	840	5470	DH27	30.5-32 TR218
30.5L-32 TL	T418 FS SB	26	760	1840	780	1885	840	5470	DH27	30.5-32 TR218
30.5L-32 TL	T418 High Power	32 PR	770	1880	790	1905	865	5590	DH27	30.5-32 TR218
DH35.5L-32 TL	T418 FS SB	24	890	2000	920	2040	905	5925	DH31	-
DH35.5L-32 TL	T418 High Power	30 PR	920	2035	950	2075	920	6030	DH31	-

SB = Steelbelt TL = Tubeless Tire

Agroforest for tractors



SIZE	Tread Pattern	LI/SI	New Tire		Tire in Service		SLR	RC	SRI	RIM	TUBE
			SW mm	OD mm	SW max mm	OD max mm					
320/85-24 TT (12.4-24)	T410	127A8 (124B)	325	1165	345	1192	546	3462	550	W9, W10 - W11	12.4-24
380/85-24 TT (14.9-24)	T410	137A8 (134B)	380	1260	410	1302	583	3768	590	W11, W13 - W12	14.9-24
380/85-24 TL (14.9-24)	T410	143A8 (140B)	390	1275	410	1302	600	3810	600	W11, W13 - W12	14.9-24
380/85-28 TT (14.9-28)	T410	139A8 (136B)	380	1365	410	1403	637	4071	650	W11, W13 - W12	14.9-28
420/85-28 TT (16.9-28)	T410	144A8 (141B)	440	1435	451	1475	669	4275	675	W13, W14L - W15L	16.9-28
460/85-30 TT (18.4-30)	T410	150A8 (147B)	480	1550	491	1598	720	4632	725	W14L, W15L - W16L	18.4-30
420/85-34 TT (16.9-34)	T410	147A8 (144B)	440	1575	451	1628	736	4734	750	W13L, W14L - W15L	16.9-34
420/85-34 TL (16.9-34)	T410	153A8 (150B)	445	1575	460	1628	736	4734	750	W13L, W14L - W15L	16.9-34
460/85-34 TT (18.4-34)	T410	152A8 (149B)	475	1645	491	1700	766	4938	775	W14L, W15L - W16L	18.4-34
420/85-38 TT (16.9-38)	T410	149A8 (146B)	440	1680	451	1729	787	5037	800	W13, W14L - W15L	16.9-38
460/85-38 TT (18.4-38)	T410	154A8 (151B)	470	1750	491	1801	819	5241	825	W14L, W15L - W16L	18.4-38
520/85-38 TT (20.8-38)	T410	160A8 (157B)	520	1850	557	1911	859	5547	875	DW16L - DW18L	20.8-38

TT = Tube Tire TL = Tubeless Tire

Twin for forestry trailers and small forestry machines



SIZE	Tread Pattern	LI/SI/PR			New Tire		Tire in Service		RC	SRI	RIM	TUBE
		ROAD PR	FOREST HT	FOREST LT	SW mm	OD mm	SW max mm	OD max mm				
500/45-22.5 TT	T404 FS	129A8	129A2	136A2	500	1020	525	1045	3066	485	AG16.00	500/45-22.5
500/60-22.5 TT	T421 SB	144A8	144A2	151A2	500	1170	525	1200	3525	550	AG16.00	500/60-22.5
600/60-30.5 LS2 TT	T414 FS	153A8	153A8	160A2	600	1495	638	1545	4485	700	AG20.00	600/60-30.5

SB = Steelbelt TT = Tube Tire

Trelleborg offers a wide range of wheels

Find out more





Discover our website

Follow us

