



EMR1042 Earthmover Radial Tires

PREMIUM RADIAL PNEUMATIC

Designed for articulated dumper and suitable for loader applications, our EMR1042 tire is the best choice for haulage operations in open pits and quarries and also suitable for infrastructure and building construction and site preparation.

The Trelleborg EMR range is designed to enhance productivity in critical construction applications, delivering both enhanced damage protection and durability. The multi surface tread design delivers control and perfect grip when it's needed the most, whether on sand, rock, gravel or soil.

The strong radial casing and state-of-the-art compound assure long life, while providing equal load distribution for a comfortable ride, maintaining low fuel consumption.

Main Benefits

- Superior traction
- Long tire life due to deep tread
- Excellent ride comfort
- Sidewall rubber ring guard protection
- Robust casing to support eventual retreading*



**ALL-STEEL RADIAL
CONSTRUCTION**



**REINFORCED
CASING**



**MULTI
SURFACE**



**EXCELLENT
RIDE COMFORT**

*Casing should be checked by a professional technician before retreading is permitted

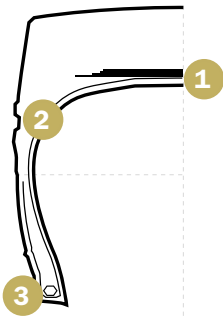


EMR1042

PREMIUM RADIAL PNEUMATIC



Superior tire technology for severe applications



1 Steel belt for increased casing resistance



2 Side cut protection



3 Reinforced bead enables reduced downtime



| Tire Size | Tread Pattern TRA | Rim Size (Permitted) | Tread Depth [32/nds] | Service Description LI/SS Transport/Loader | Tire Load Capacity (lbs) at 6 (mph) | Tire Pressure (psi) | Tire Load Capacity (lbs) at 31 (mph) | Tire Pressure (psi) |
|-----------|-------------------|----------------------|----------------------|--|-------------------------------------|---------------------|--------------------------------------|---------------------|
| 23.5 R 25 | E4/L4 | 19.50/2.5-25 | 64 | ** 185 B/201 A2 | 31,973 | 83 | 20,396 | 65 |
| 26.5 R 25 | E4/L4 | 22.00/3.0-25 | 68 | ** 193 B/209 A2 | 40,793 | 83 | 25,358 | 65 |
| 29.5 R 25 | E4/L4 | 25.00/3.5-25 | 73 | ** 200 B/216 A2 | 49,392 | 83 | 30,870 | 65 |

** - Index of tire strength



Yokohama TWS North America, Inc.
107 Audubon Road - Building 2 - Suite 205
Wakefield, MA 01880
800-948-8473
info.tws@yokohama-tws.com
www.trelleborg-tires.com/en-us

